

Condo - What to Expect By Year Built

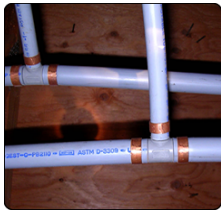
	1900 - 1920	1921 - 1930	1931 - 1940	1941 - 1950	1951 - 1955	1956 - 1960	1961 - 1965	1966 - 1970	1971 - 1975	1976 - 1980	1981 - 1985	1986 - 1990	1991 - 1995	1996 - 2000	2001 - 2005	2006 - 2010	2011 - 2015	2016 to 2020	
Electricals																			
Aluminum Wiring							1965 - 1972 - Insurance Issue												
Fuse Breakers			1935 to early 60s - Insurance Issue																
Breakers							1960 until now - Old Breakers												
GFCI Outlet Exterior													1975 until now						
GFCI Outlet Bathroom													1975 until now						
GFCI Outlet Kitchen															1987 until now				
Electrical Panels																			
Environmental																			
Asbestos Containing Material							1920 to 1990												
Lead Paint								Banned in 1978. The older the house is, the higher the chance											
Chinese Drywall																	2001 to 2007		
Asbestos Pop Corn Ceiling							1930 until 1978												
Plumbing																			
Copper Pipes																			
Polybutylene Pipes																			
Kitec Pipes																			
PEX Pipe																			
Mechanical Exhaust																			
Bathroom Fan Exhaust																			
Kitchen Range Exhaust																			
Roof																			
Shingle Roof																			
Concrete Roof																			
Torch-on Roof																			
Shake Shingles																			
Building Envelop																			
Rainscreened Windows																			

Copper Pipes



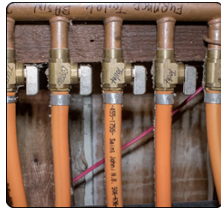
From 1930 to Now
Prior to 1986 - Old

Polybutylene



Insurance Issue
Early 70s to Mid 90s

Kitec



1995 & 2005
Insurance Issue

PEX



Mid 90s to Now
Best Plumbing

Rainscreened or Not

Some rainscreening is obvious to the eye as it looks more like flashing and is often set midway between floors/stories. Some other visual indications of rainscreening include window overhangs, brick exteriors (brick is a natural rainscreen product), horizontal air gaps and drainage-specific areas along balconies and roof lines. You can easily tell if a building has a rainscreen by feeling under the exterior wall. If you feel a gap under it, likely its been updated with a rain screen..



* Asbestos Containing Material: Texture Ceiling, Drywall Mud